

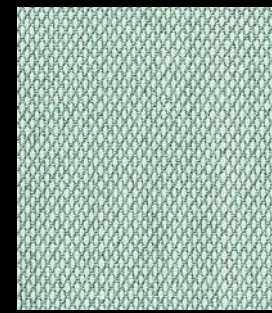
Steelcut Trio 3

cat. Extra

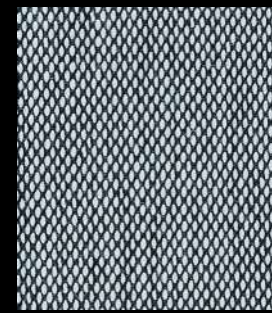
90% new wool worsted - 10% nylon
Flame retardant - 100.000 Martindale



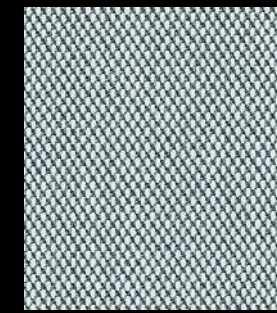
0105



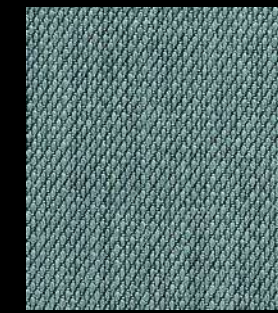
0113



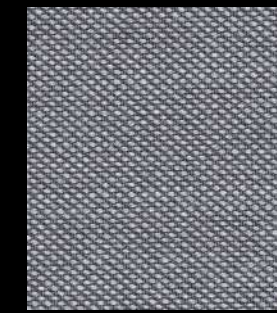
0124



0133



0153



0176



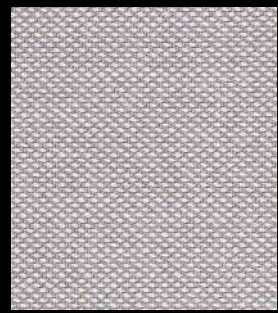
0195



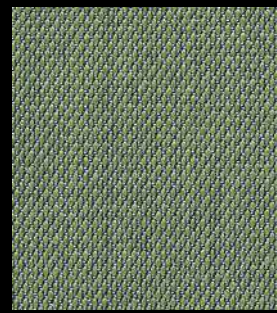
0205



0213



0246



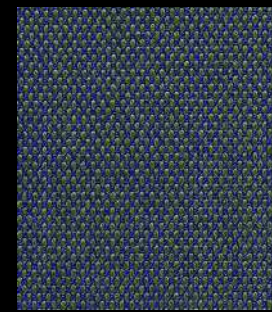
0253



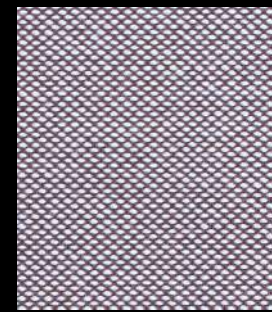
0266



0276



0283



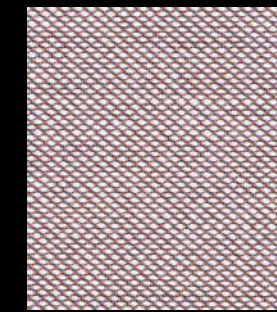
0336



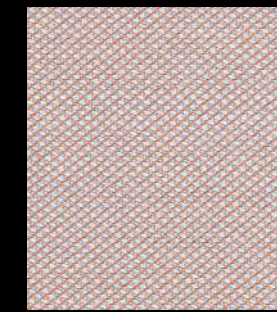
0376



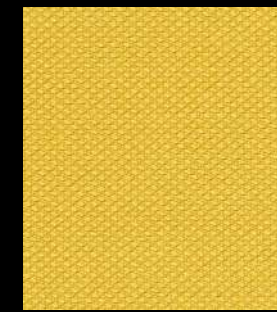
0383



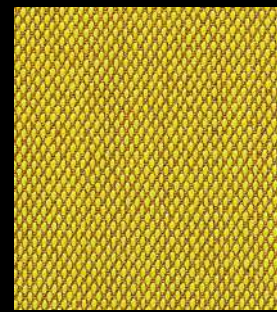
0416



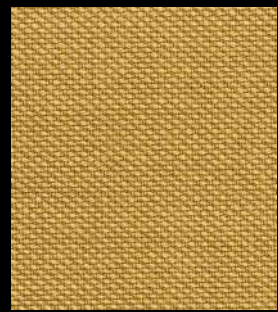
0426



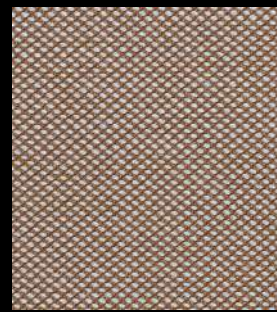
0446



0453



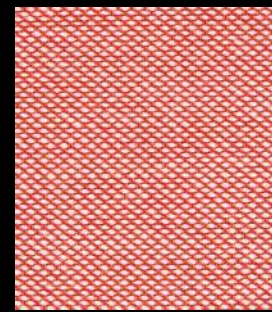
0466



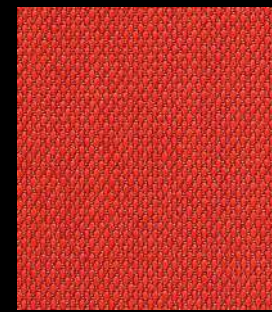
0476



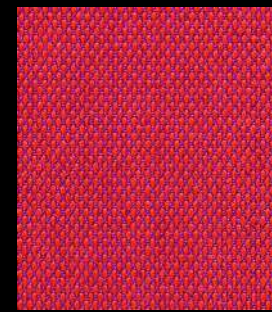
0515



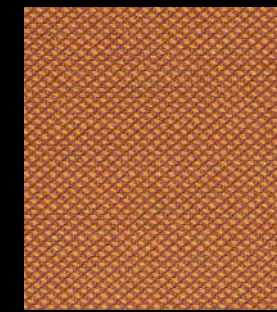
0526



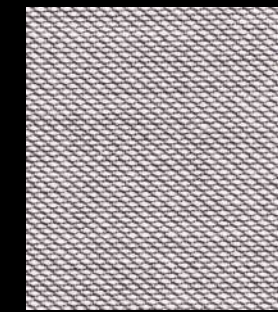
0533



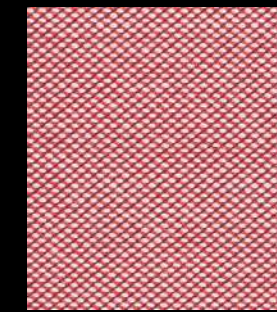
0553



0576



0616



0636



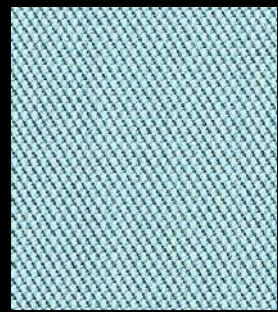
0645



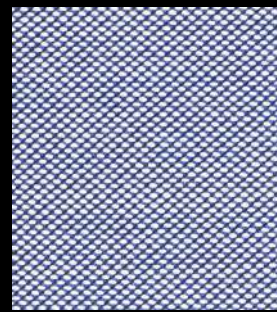
0666



0686



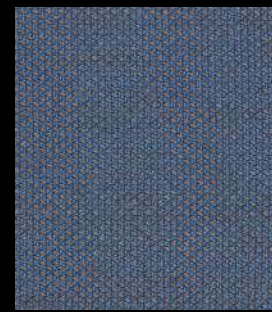
0713



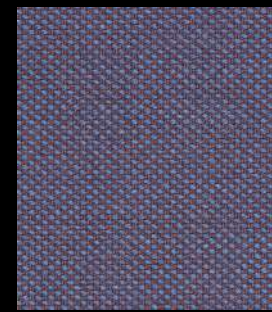
0716



0746



0756



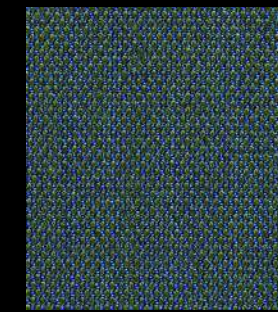
0776



0796



0806



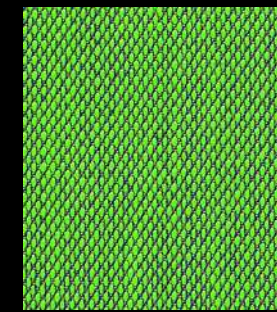
0883



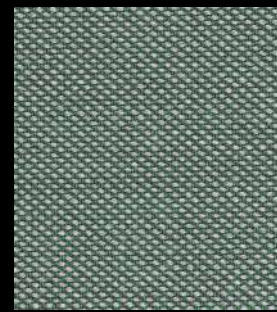
0906



0946



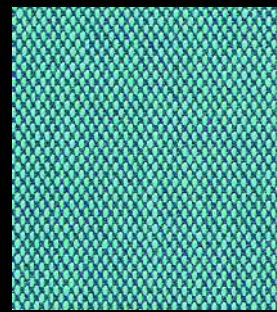
0953



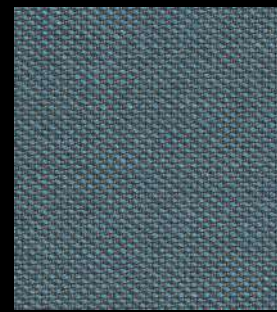
0966



0976



0983



0996

<div>laCividina</div> <div>cat. Extra</div>		<div>eco-sustainable</div> <div>Steelcut Trio 3</div>	Technical details	
			<div>Composition</div>	<div>90% new wool worsted - 10% nylon</div>
<div>2023</div>			<div>Weight</div>	<div>Gr./m² 770</div>
			<div>Abrasion test</div>	<div>Martindale - ISO 12947-2: 100.000 rubs</div>
			<div>Lightfastness</div>	<div>ISO 105-B02: 6/7</div>
			<div>Pilling</div>	<div>ISO 12945-2: 4</div>
			<div>Flame retardant</div>	<div>AS/NZS 1530.3 AS/NZS 3837 class 2 ASTM E84 Class B Unadhered ASTM E84 Class B Adhered BS 5852 part 1 EN 1021-1/2 IMO FTP Code 2010 Part 8 NF D 60 013 NFPA 260 ÖNORM B1/Q1 UNI 9175 1IM US Cal. Bull. 117-2013</div>
			<div>Environment</div>	<div>ECOLABEL GREENGUARD CERTIFICATION GREENGUARD GOLD CERTIFICATION HPD EPD</div>